

Bellows Suction Cups FSGAO (1.5 Folds)

Suction area (LxW) 95 x 40 mm and 140 x 65 mm



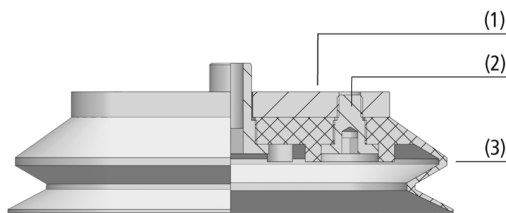
Suitability for industry specific applications

Application

- Oval bellows suction cup with 1.5 folds for use in multi-shift operations with very short cycle times
- Handling of oiled or curved, elongated sheets (profiles, pipes) or stamped and body parts
- Handling of cardboards, wood and similar materials under rough operating conditions
- Handling of workpieces with extremely abrasive surfaces such as rough cardboard sheets



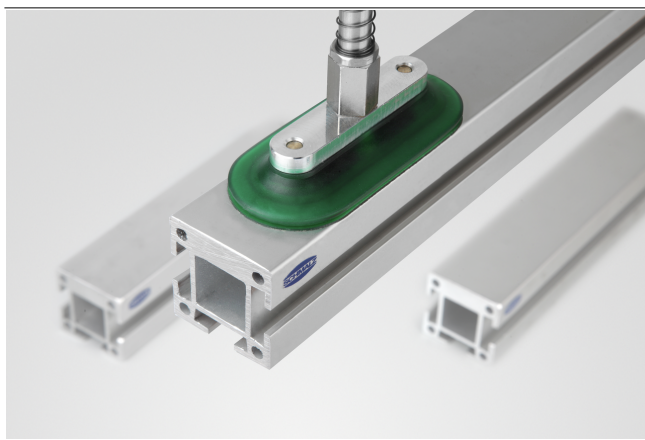
Bellows Suction Cups FSGAO (1.5 Folds)



Design

- Suction cup FSGAO, consisting of suction cup FGAO (Vulkollan VU1) with 1.5 folds (3) and connection plate (1)
- Connection plate screwed (2) to suction cup and capable of handling very heavy loads
- The suction cup can be replaced separately when worn

System design Bellows Suction Cups FSGAO (1.5 Folds)



Bellows suction cups FSGAO being used for handling metal beams

Product highlights

- Highly tear resistant material Vulkollan VU1 withstands enormous stress
- Insensitive to oils thanks to good chemical resistance
- Minimal abrasion (approx. 10 - 12 mm³ according to DIN 53516) allows up to 20 times longer service life than standard NBR
- 1.5 folds ensure high suction force and effective damping of sensitive workpieces

Bellows Suction Cups FSGAO (1.5 Folds)

Suction area (LxW) 95 x 40 mm and 140 x 65 mm

Designation code Bellows Suction Cups FSGAO (1.5 Folds)

FSGAO	–	95x40	–	VU1-72	–	G1/8-AG
1		2		3		4

1 – Abbreviated designation

Code	Version
FSGAO	1.5 folds, oval

2 – Suction area

Code	LxW in mm
95x40...140x65	95x40 and 140x65

3 – Material

Code	Material
VU1-72	VU1-72

4 – Connection

Code	Connection
G1/8-AG	G1/8-AG (AG = male (M))
G1/4-AG	G1/4-AG

Suction cup FSGAO (elastomer part + support plate) is delivered assembled. The assembly consists of:

- Suction cup of type FGAO – elastomer part, available in various dimensions (LxW)
- Aluminum support plate

Available spare parts: suction cup FGAO

Ordering data Bellows Suction Cups FSGAO (1.5 Folds)

Type*	Part no.
FSGAO 95x40 VU1-72 G1/8-AG	10.01.06.00503
FSGAO 140x65 VU1-72 G1/4-AG	10.01.06.00498

*Additional material specifications at beginning of the section "Vacuum Suction Cups"

Ordering data Spare parts Bellows Suction Cups FSGAO (1.5 Folds)

Type	Spare parts	Part no.
FSGAO 95x40 VU1-72 G1/8-AG	Bellows suction cup (oval)	FGAO 95x40 VU1-72 N038
FSGAO 140x65 VU1-72 G1/4-AG	Bellows suction cup (oval)	FGAO 140x65 VU1-72 N039
		10.01.06.00499
		10.01.06.00468

Technical data Bellows Suction Cups FSGAO (1.5 Folds)

Type	Suction force (-600 mbar) [N]*	Pull-off force [N]	Volume [cm ³]	Workpiece radius min. (convex) [mm]	Hose inner diameter (recom.) d [mm]**	Nipple family
FSGAO 95x40 VU1-72 G1/8-AG	95	110	39	20	9	N 038
FSGAO 140x65 VU1-72 G1/4-AG	225	255	114	30	9	N 039

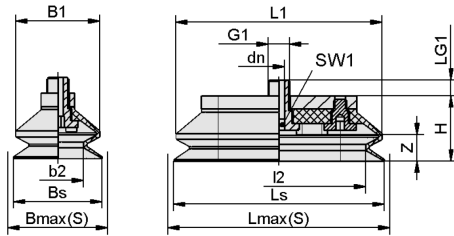
*The specified suction forces are theoretical values at a vacuum of -0.6 bar and with a smooth, dry workpiece surface - they do not include a safety factor

**The recommended hose diameter is based on a hose length of approx. 2 m

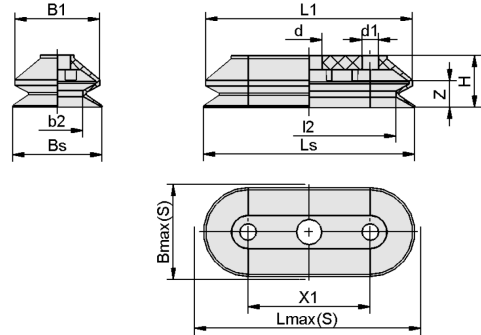
Bellows Suction Cups FSGAO (1.5 Folds)

Suction area (LxW) 95 x 40 mm and 140 x 65 mm

Design data Bellows Suction Cups FSGAO (1.5 Folds)



FSGAO VU1



FGAO VU1

Bellows Suction Cups FSGAO (1.5 Folds)

Suction area (LxW) 95 x 40 mm and 140 x 65 mm

Design data Bellows Suction Cups FSGAO (1.5 Folds)

Type*	b2 [mm]	B1 [mm]	Bmax(S) [mm]**	Bs [mm]	dn [mm]	G1	H [mm]	LG1 [mm]	I2 [mm]	L1 [mm]	Lmax.(S) [mm]***	Ls [mm]	SW1 [mm]	Z (Stroke) [mm]
FSGAO 95x40 VU1-72 G1/8-AG	23	38	42.5	40	5	G1/8"-M	30	8	78	93	97	95	4	12
FSGAO 140x65 VU1-72 G1/4-AG	36	65	68.5	65	8	G1/4"-M	38	10	111	140	142	140	8	16

*Acceptable dimensional tolerances for rubber parts concerning to DIN ISO 3302-1 E3

**External dimension of the suction cup when it is pressed against the workpiece by the vacuum

***External dimension of the suction cup when it is pressed against the workpiece by the vacuum

Type*	b2 [mm]	B1 [mm]	Bmax(S) [mm]**	Bs [mm]	d [mm]	d1 [mm]	H [mm]	L1 [mm]	I2 [mm]	Lmax.(S) [mm]***	Ls [mm]	X1 [mm]	Z (Stroke) [mm]
FGAO 95x40 VU1-72 N038	23	38	43	40	11.5	7.5	23.5	93	78	97	95	55	12
FGAO 140x65 VU1-72 N039	36	65	69	65	15.5	9.5	30.0	140	111	142	140	75	16

*Acceptable dimensional tolerances for rubber parts concerning to DIN ISO 3302-1 E3

**External dimension of the suction cup when it is pressed against the workpiece by the vacuum

***External dimension of the suction cup when it is pressed against the workpiece by the vacuum